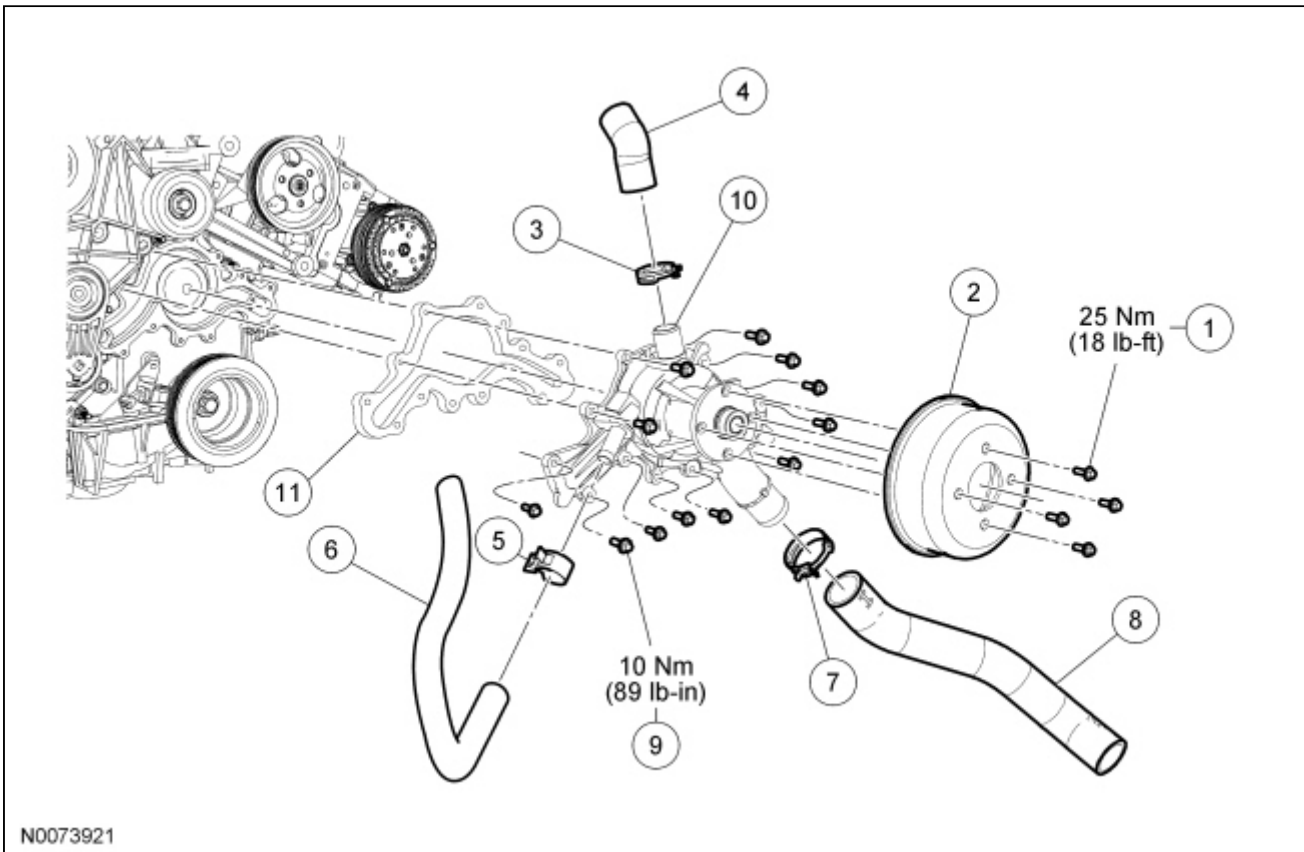


Coolant Pump — 4.0L SOHC

Material

Item	Specification
Motorcraft® Metal Surface Prep ZC-31-A	—



Item	Part Number	Description
1	N807938	Coolant pump pulley bolt (4 required)
2	8509	Coolant pump pulley
3	W525966	Hose clamp
4	8548	Thermostat housing-to-coolant pump hose
5	8287	Hose clamp
6	18C266	Heater hose
7	8287	Hose clamp
8	8286	Radiator-to-coolant pump hose
9	500014	Coolant pump bolt (12 required)
10	8501	Coolant pump
11	8507	Coolant pump gasket

Removal and Installation

1. Drain the engine coolant. For additional information, refer to [Cooling System Draining, Filling and](#)

[Bleeding](#) in this section.

2. Remove the Air Cleaner (ACL) outlet pipe. For additional information, refer to [Section 303-12](#).
 3. Loosen the 4 coolant pump pulley bolts.
 - To install, tighten to 25 Nm (18 lb-ft).
 4. Remove the accessory drive belt. For additional information, refer to [Section 303-05](#).
 5. Remove the 4 coolant pump pulley bolts and the coolant pump pulley.
 6. Disconnect the thermostat housing-to-coolant pump hose.
 7. Disconnect the heater hose and position aside.
 8. Disconnect the radiator-to-coolant pump hose and position aside.
 9. Remove the 12 coolant pump bolts and the coolant pump.
 - Discard the coolant pump gasket.
 - Use metal surface prep and a suitable plastic or wooden scraper to clean the sealing surfaces.
 - To install, tighten to 10 Nm (89 lb-in).
 10. To install, reverse the removal procedure.
 - Install a new coolant pump gasket.
 11. Fill and bleed the cooling system. For additional information, refer to [Cooling System Draining, Filling and Bleeding](#) in this section.
-